

# Know your brain

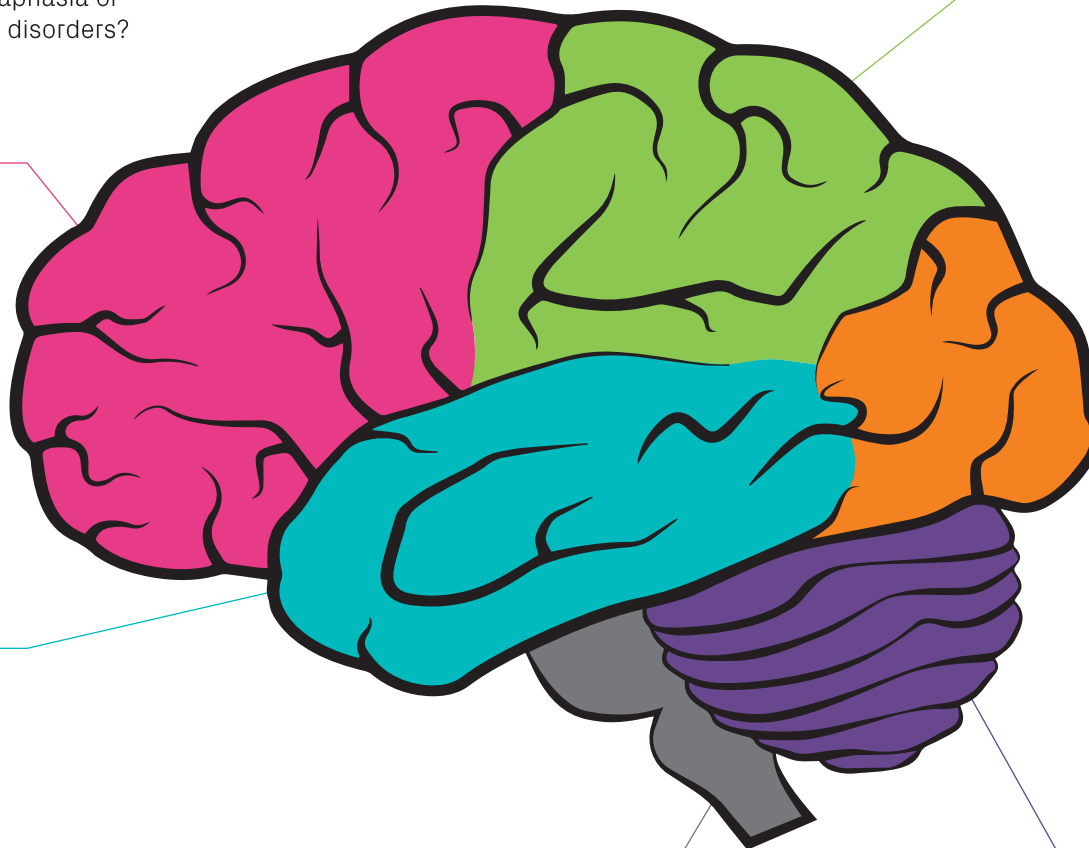
What happens when the parts of your brain are impacted by stroke, brain injury, aphasia or other cognitive & communication disorders?

## FRONTAL LOBE

Involved in a wide range of higher level cognitive functions including: attention, reasoning, judgment, decision-making, planning, self-assessment or performance, problem solving, motor skills, impulse control, language production, emotional regulation, and social behavior.

## TEMPORAL LOBE

Responsible for understanding and processing language, sound processing, and memory. Makes sense of complex visual information, and facial recognition.



## PARIETAL LOBE

Sensory perception (5 senses), interprets inputs from other areas of the body. Involved in object recognition and interpreting where objects are in space; math skills, and writing skills.

## OCCIPITAL LOBE

Receives and processes visual information from the eyes, depth perception, and discrimination of movement and color.

## BRAIN STEM

Regulates basic functions such as breathing, heart rate, sleep cycle, and swallowing. Houses all the cranial nerves.

## CEREBELLUM

Coordinates and monitors movement. Involved in balance, staying upright and muscle tone.

The Learning Corp

**Constant Therapy**

# Recover skills with Constant Therapy tasks

\*A sample list of clinician-recommended tasks

## AUDITORY COMPREHENSION

### For mild impairment **Levels**

Inference Voicemail	1
Spoken Short Story	4-6

### For moderate impairment **Levels**

Auditory Commands	2-4
Voicemail	1

### For severe impairment **Levels**

Spoken Word Comprehension	1-3
Spoken-Written Word Matching	1-4

## VERBAL EXPRESSION

### For mild impairment **Levels**

Form/Say Passive Sentences Aloud	3
Sentence Picture Description	1

### For moderate impairment **Levels**

Name Verbs	3
Repeat Active Sentences	3

### For severe impairment **Levels**

Picture Feature Identification	1-3
Name Pictures	1

## READING COMPREHENSION

### For mild impairment **Levels**

Long Reading Comprehension	2-3
Inference Reading	1-3

### For moderate impairment **Levels**

Functional Reading	1-3
Short Reading	1-3

### For severe impairment **Levels**

Written Lexical Decision	1
Written Word Comprehension	1-3

## WRITTEN EXPRESSION

### For mild impairment **Levels**

Spelling to Dictation	5-6
Picture Spelling	5-6

### For moderate impairment **Levels**

Spelling to Dictation	3-4
Picture Spelling	3-4

### For severe impairment **Levels**

Word Copy Completion	1
Picture Spelling Completion	1

## ATTENTION

### For mild impairment **Levels**

Alternating Symbol Matching	5-8
Alternating Word Ordering	3-5

### For moderate impairment **Levels**

Symbol Matching	6-9
Repeat Number Sequences	2

### For severe impairment **Levels**

Flanker	1
Playing Card Slapjack	1

## MEMORY

### For mild impairment **Levels**

Pattern Recreation	5-12
Auditory Word Ordering	3-5

### For moderate impairment **Levels**

Picture N-Back Memory	2
Spoken Word Matching	3

### For severe impairment **Levels**

Face Matching	1-2
Pattern Recreation	1

## PROBLEM SOLVING

### For mild impairment **Levels**

Functional Math	3
Map Reading	3

### For moderate impairment **Levels**

Functional Math	2
Clock Math	2

### For severe impairment **Levels**

Written Word Ordering	1
Currency	1

See the full list of Constant Therapy task recommendations at [thelearningcorp.com](http://thelearningcorp.com).

The Learning Corp  
**Constant Therapy**